

K+B

DESIGN + INNOVATION + LIFESTYLE

products

kbis trends

hot cabinetry



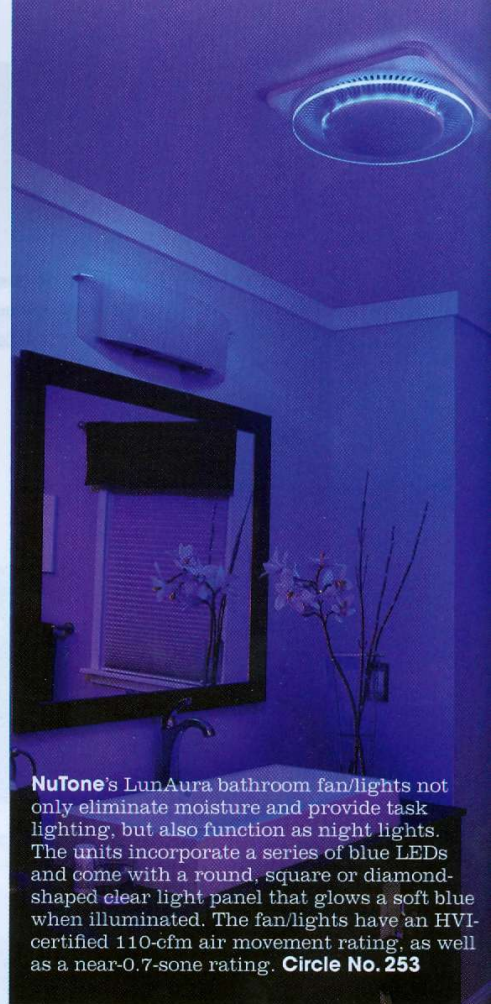
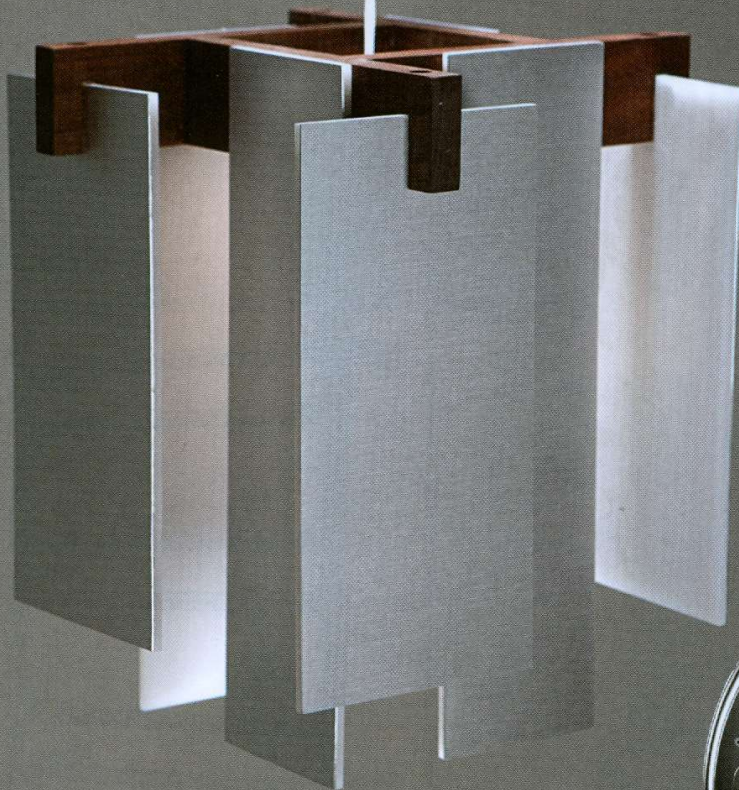
KITCHEN AND BATH BUSINESS / MAY/JUNE 2011

WWW.KBBONLINE.COM \$10 U.S.

THE OFFICIAL SPONSOR OF



Salix from **Cerno** is a 7 $\frac{1}{2}$ -in. x 7 $\frac{1}{2}$ -in. x 9 $\frac{1}{2}$ -in. pendant lit with high-brightness LEDs that consume just 3.2W of energy and are dimmable. Unabashedly modern in look, it features a series of polymer and aluminum panels attached to a walnut frame. **Circle No. 251**



NuTone's LunAura bathroom fan/lights not only eliminate moisture and provide task lighting, but also function as night lights. The units incorporate a series of blue LEDs and come with a round, square or diamond-shaped clear light panel that glows a soft blue when illuminated. The fan/lights have an HVI-certified 110-cfm air movement rating, as well as a near-0.7-sone rating. **Circle No. 253**

Part of **Levaqua's** OneTouch Digital Showerhead Series, the Series 120 showerhead allows users to choose between five spray settings with a touch of the button. These include: Spray, which ensures a full spray; Massage, which is more targeted; Combo, which combines the Spray and Massage settings; Eco, which uses 20 percent less water; and Pause, which reduces the flow to a trickle. For additional water savings, a timer can be set to limit showers to 5 or 10 minutes, after which a pulse of water will inform users time is up. **Circle No. 252**

